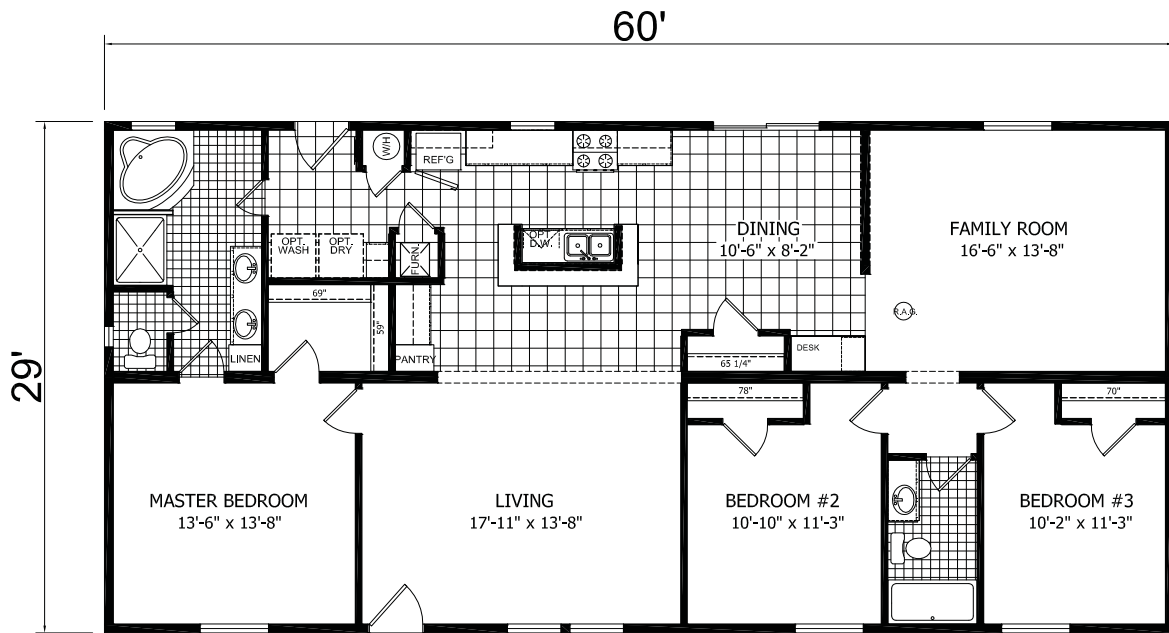



Model: Conejos Ranch



MODEL 05-754
 3 BEDROOM, 2 BATH
 NOMINAL SIZE: 29' x 64'
 ACTUAL SIZE: 29' x 60'
 TOTAL AREA: 1740 SQ. FT.

 3200 ENTERPRISE AVE., YORK, NE 68467	APPROVER'S SEAL	MODIFICATIONS	MODEL: 05-754 HUD 29'x60' 3 BEDROOM 2 BATH	SHEET: L-101
			TITLE: LITERATURE PLAN	
		PROPRIETARY AND CONFIDENTIAL THESE DRAWINGS AND SPECIFICATIONS ARE ORIGINAL PROPRIETARY AND CONFIDENTIAL MATERIALS OF CHAMPION. COPYRIGHT © 1978-2012 BY CHAMPION	DRAWN BY: TRL DATE: 10-04-15	
			SCALE: 1/8" = 1'-0"	



Model 05-754

- 3 Bedroom
- 2 Bath
- 1,740 sq. ft.



The Conejos home boasts a warm family room off of the kitchen, so the family can all be together during all of their activities. The master bedroom has a beautiful master bath with his & her sinks, and a separate bath and shower. Even the toilet has its own room. All the bedrooms have easy access to a bathroom.

- 1 Acre Lot
- Standard Garage
- Private WATER Well
- Qualifies for USDA Financing

FACTORY MODULARS
Building Homes Since 1984

